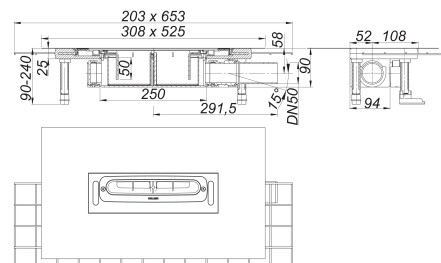
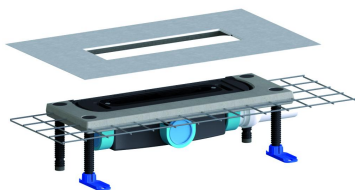


Drain body CeraFlex, DN 50

Part number: 537140
 GTIN: 4001636537140
 Rebate group: 11



Description:

Drain body CeraFlex, DN 50

Conforming to DIN EN 1253

For installation with shower channels CeraFloor, CeraWall, CeraFrame, Zentrix and CeraNiveau.

Outlet DN 50 horizontal, can be positioned on three sides without tools, with ball-joint, adjustable 0 – 15 degrees

Specification:

- polymer concrete collar with steel mesh reinforcement
- flexible sealing collar for secure bonding of under-tile waterproofing
- accessories for sound insulated installation
- sound absorbing and height adjustable levelling legs
- removable trap insert with 50 mm water seal
- temporary blanking plate

Material:

Drain body and outlet polypropylene

Spare parts:

535504 trap insert DallFlex

539144 sealing collar DallFlex